



RUTGERS

Ocean Observing, The Environment, and Offshore Wind

Joseph Brodie

Time for Turbines

16 August 2019

Center for Ocean Observing Leadership
Department of Marine and Coastal Sciences
School of Environmental and Biological Sciences

Rutgers University – Center for Ocean Observing Leadership

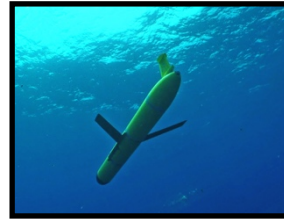
MARACOOS – A forum to bring forward the best science & technology



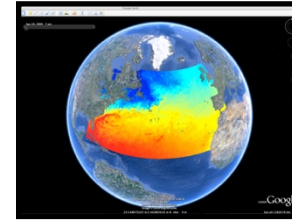
L-Band & X-Band Satellite Receivers



46 Site CODAR Network



~ 500 Glider Deployments

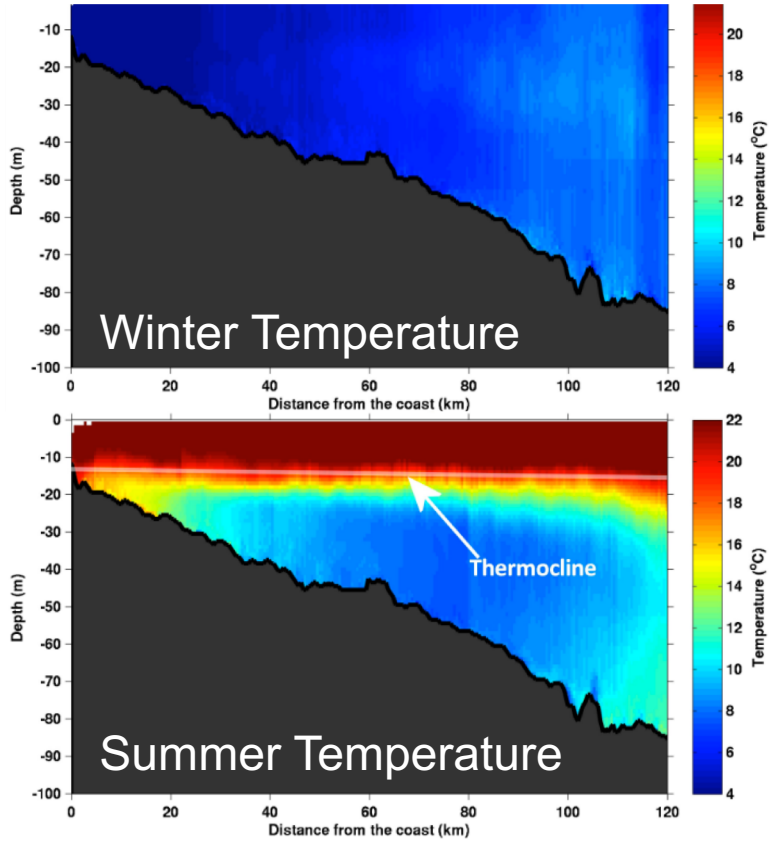


3-D Nowcasts & Forecasts

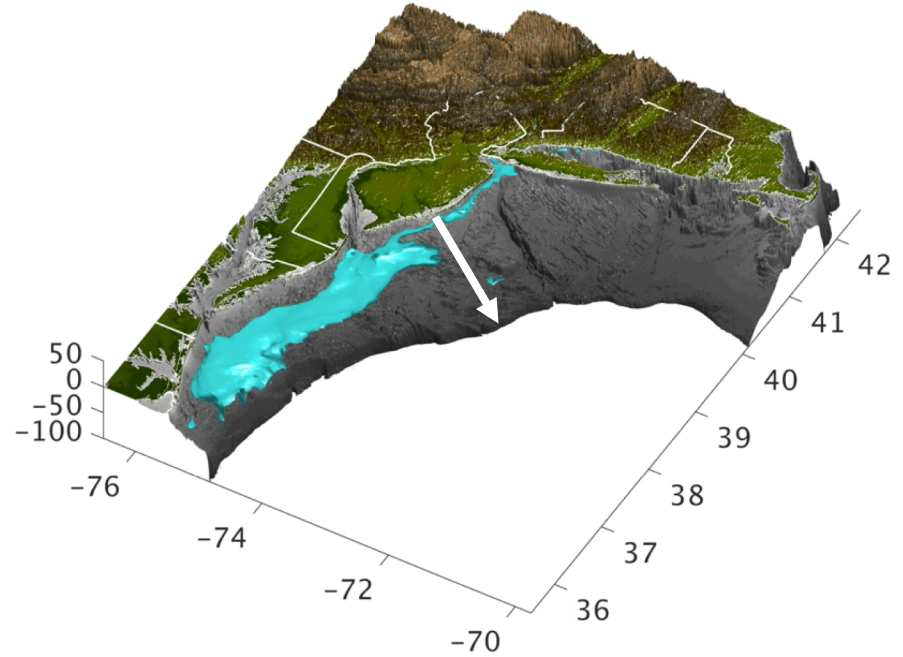


Center for Ocean Observing Leadership

Essential Ocean Feature: Mid-Atlantic Cold Pool



12° C on May 15, 2017

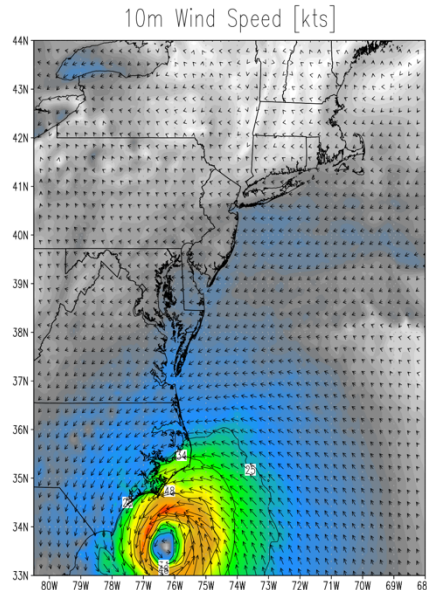


Atmospheric Modeling with RU-WRF

- Daily weather model run since 2011, generates hourly output
- Includes key ocean temperature data
- Used for research on hurricanes and sea breezes
- Assessment of NJ's offshore wind resource



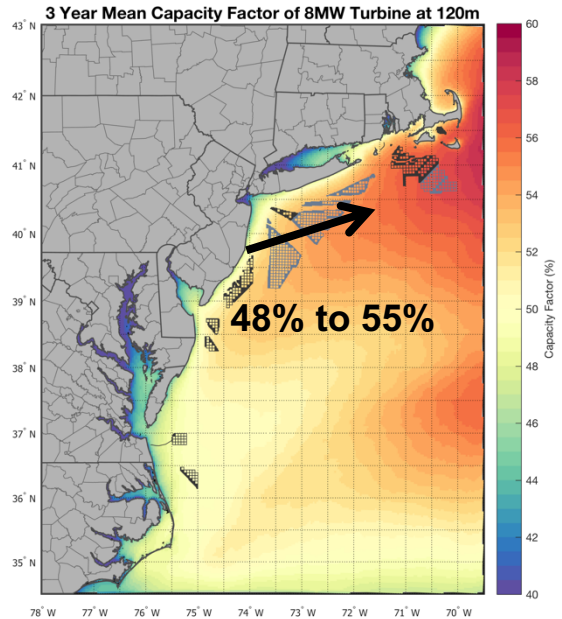
Hurricane Florence



RUTGERS
Center for Ocean Observing Leadership
rucool.marine.rutgers.edu

RU-WRF 9 km Model: Initialized 00Z13SEP2018
Valid 20Z13SEP2018 (Thu) | Forecast Hour 20

Wind Resource: 3 Year Mean



Supporting Fisheries in the Mid-Atlantic Bight: *It takes a Community*

OpenOcean Partnership

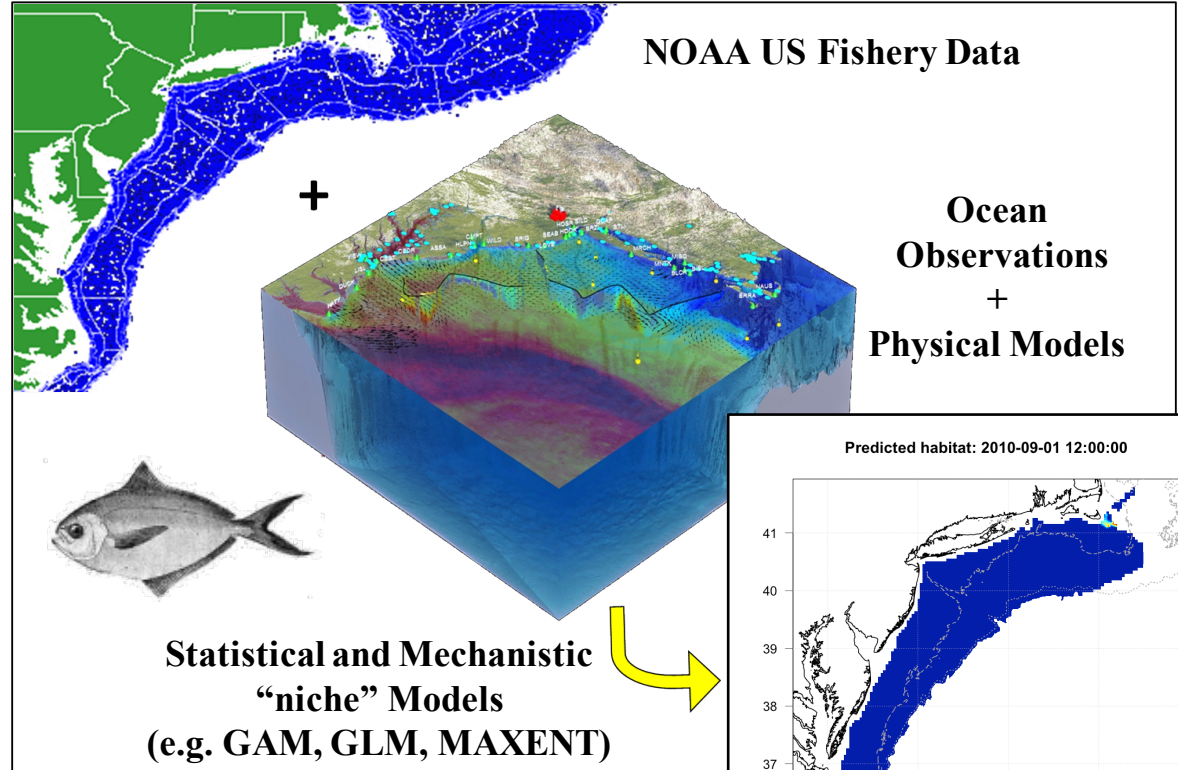
Fishing Industry

Fishery Scientists/Ecologists

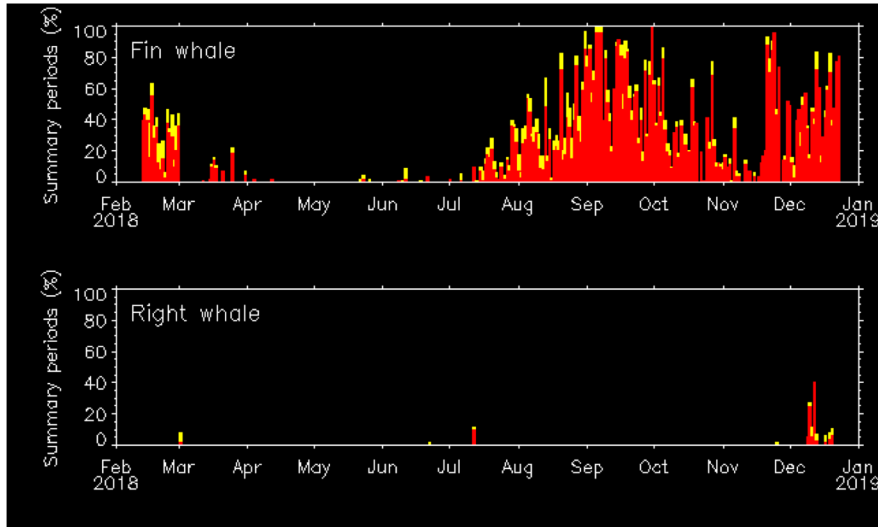
Physical and Biological
Oceanographers

Fisheries Management

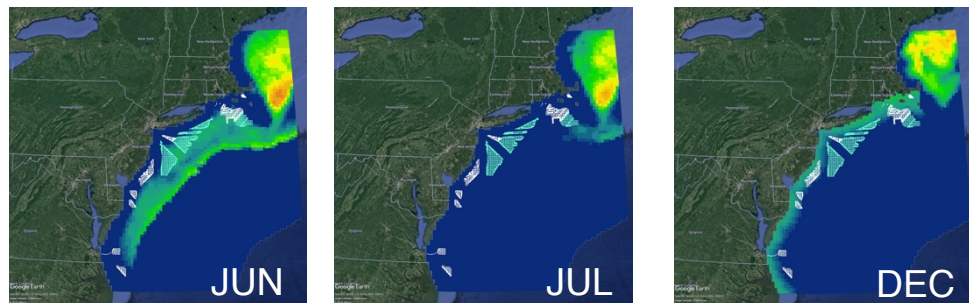
Human Dimensions



Marine Mammals



Mark Baumgartner, Robots4Whales (WHOI)



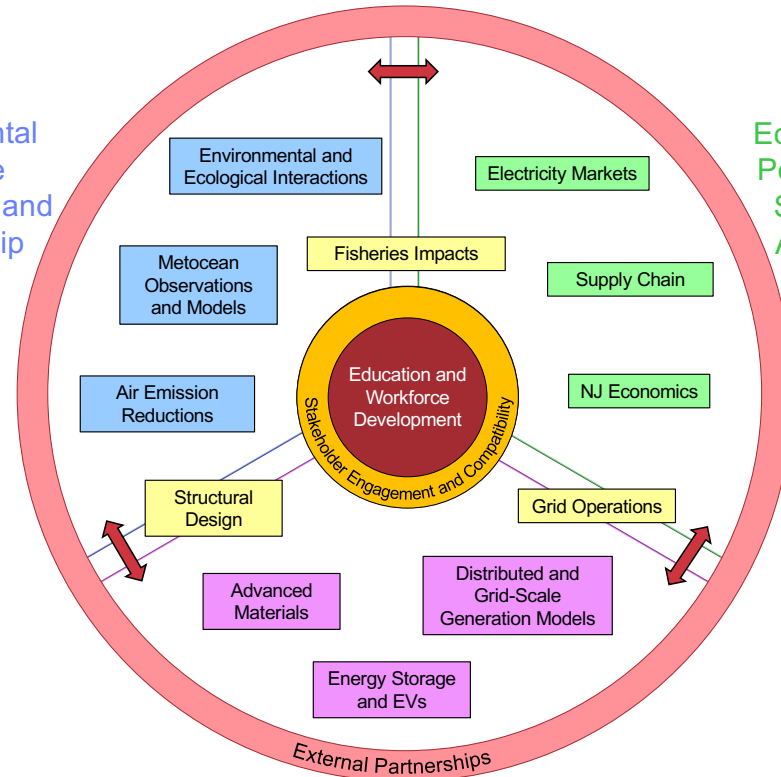
Data: Duke University Marine Geospatial Ecology Lab



Wind Innovation Working Group

Environmental
Resource
Assessment and
Stewardship

Economics,
Policy, and
Systems
Analysis



Materials, Manufacturing, and Infrastructure